



DATE	11-19-04	REV. DATE	11-24-04
MAXIMUM ALTITUDE	10000 ft [3000 m]		
NET WEIGHT	102 lb [46 kg]		
ANGLE OF INCLINATION FROM THE VERTICAL	0° TO 70°		

KV CLASS 25 kV BIL 150 kV Uy 16 kV

CURRENT RATING

2000A BOTTOM CONNECTION IN 55°C RISE OIL

MIN. CREEP 27.50 [698.5] MIN. STRIKE 14.00 [355.6]

CREEP/Uy 1.72 [43.7] STD. IEEE C57.19.00

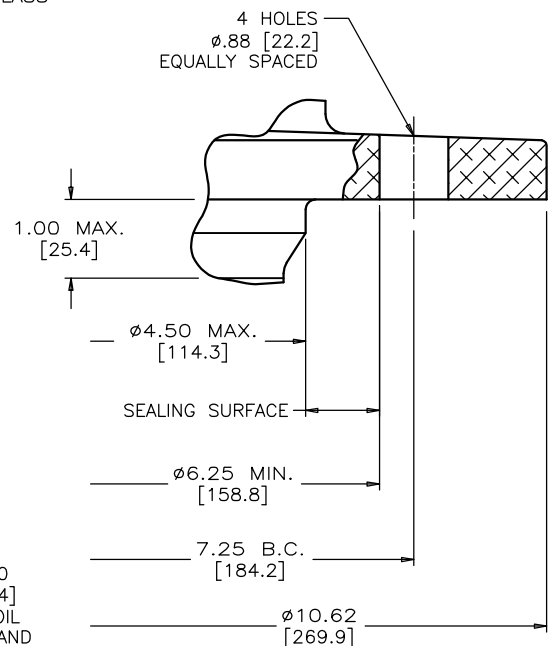
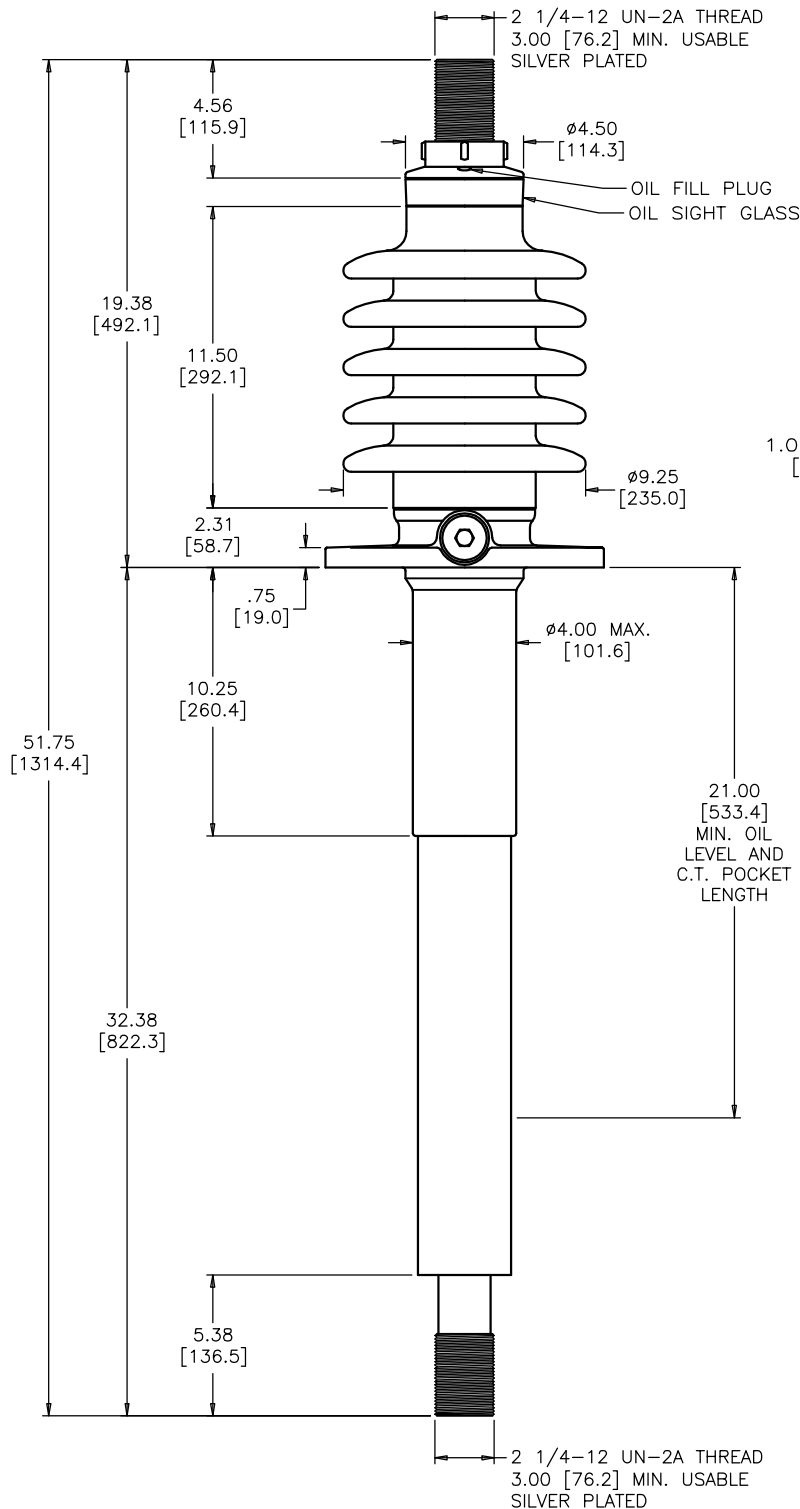
PCB CONTENT OF OIL IS LESS THAN 1 ppm

DWG.	CATALOG NUMBER	GLAZE COLOR
SD	B-89223-325	BROWN
SD	B-89223-325-70	LT. GRAY

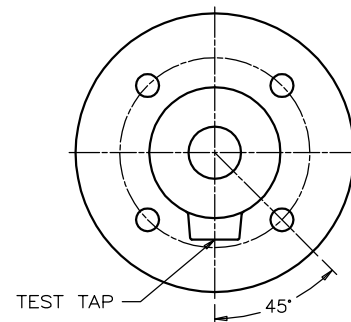
TITLE IEEE STANDARD BUSHING

PRC BUSHING

2 1/4-12 TOP & BOTTOM THREAD
 .88 [22.2] LONGER ABOVE FLANGE
 2.88 [73.0] LONGER BELOW FLANGE
 SILVER PLATED BOTTOM TERMINAL



MOUNTING FLANGE DETAIL

FLANGE ALIGNMENT DIAGRAM
TOP VIEW

DIMENSIONS IN INCHES [MILLIMETERS]

REVISION TOP TERMINAL WAS 2-12, 2.12 MIN. USABLE, 51.75 WAS 50.88, 19.38 WAS 18.50, 4.56 WAS 3.69, REVISED TITLE

SCALE 1/5

NOTE TO PURCHASER:
 ALL SALES OF PCORE PRODUCTS ARE SUBJECT
 TO OUR STANDARD TERMS AND CONDITIONS
 AND THE LIMITED WARRANTIES THEREUNDER